

VAN NUYS / VALLEY GLEN

COMMUNITY OF SCHOOLS

VICKY DAMONTE

COMMUNITY OF SCHOOLS ADMINISTRATOR

JOSEPH A. PRENDEZ

LEAD DIRECTOR



VAN NUYS-VALLEY GLEN
COMMUNITY OF SCHOOLS
"Building Upon Knowledge and Wisdom"

Community Connection



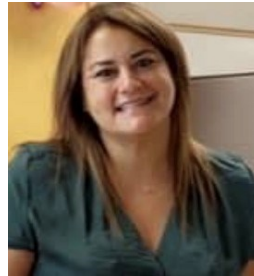
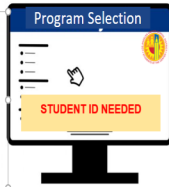
In This Issue:

- Message from Ms. Damonte, CoSA
- Class Schedule Selection Options
- Return to Campus FAQ
- Safe Steps to Safe Schools
- Community of School Highlights
- Parent Workshops/Resources

PROGRAM SELECTION FORM: Questions

reopening.lausd.net/familyselection

- Hybrid or Online
- On-site supervised care
- School bus transportation
- 2021-22 School Calendars
- Summer School interest



Vicky Damonte
Van Nuys / Valley Glen
CoS Administrator

During the month of March, we began offering in-person services for targeted groups of students, including childcare, one-on-one and small group instruction, services for students with special needs, and a return to athletic conditioning. The target for reopening schools remains mid-April for preschool and elementary school students, as well as students with learning differences and disabilities and by the end of the April for secondary schools. The District's plan to reopen is dependent upon: the highest standard of health practices and protocols at schools must be in place, there must be lower levels of the virus in the communities we serve, and timely and sufficient access to vaccinations must be available for school staff. With health practices and protocols at our schools exceeding the most recent guidance from the Centers for Disease Control, COVID-19 levels in the Los Angeles area declining, and school staff now being offered the opportunity to receive the vaccine. You are encouraged you to stay informed as we continuously are providing updates on our eventual plan for students to physically return to campus safely. Please fill out the selection survey that was sent to you to select a hybrid model or remote model when your child returns to campus. As a former proud Principal at Grant High School, I want to Congratulate the Grant High School Lancers for winning the 2021 Academic Decathlon...way to represent our Community of Schools! I welcome your feedback at pdamonte@lausd.net.

CONGRATULATIONS

2021 LAUSD ACADEMIC DECATHLON CHAMPIONS



Grant High School

1st Place
Rebecca McMurrin, Principal

Van Nuys High School
2nd Place
Yolanda Gardea, Principal



Ulysses S. Grant High School (Grant High) in Valley Glen is the winner of Los Angeles Unified's 40th annual Academic

A rigorous scholastic competition that challenges students' knowledge and skill in a variety of subjects. The theme of this year's decathlon is "The Cold War," with students spending countless hours of intense study preparing for multiple-choice tests in art, economics, math, music, science and social science, as well as prepared and impromptu speeches, an interview and an essay. Coached by Grant High teacher David Sanchez and former Academic Decathlete Brennan Azizi, the winning team students Yadira Castillo, Braulio Hernandez, Vivian Le, Ruben Palafox, Mary Tovanyan and Juan Valencia took first place with 48,180.3 of a possible 60,000 points. In addition to the team scores, Yadira Castillo from Grant High earned the highest individual score with a total of 8,860.7 points. **Van Nuys High School placed 2nd place with 40,316.6 points.**

CONGRATULATIONS!



ELEMENTARY SAMPLE SCHEDULE: AM/PM

ETK/CSPP -
Grades 5/6



	MON*	TUE	WED	THU	FRI
In-Person Instruction (AM) 8:00 - 11:00 AM	Cohort A: ON CAMPUS	Cohort A: ON CAMPUS	Cohort A: ON CAMPUS	Cohort A: ON CAMPUS	Cohort A: ON CAMPUS
TRANSITION TIME: CLASSROOM CLEANING					
In-Person Instruction (PM) 12:00 - 3:00 PM	Cohort B: On Campus or Online	Cohort B: On Campus or Online	Cohort B: On Campus or Online	Cohort B: On Campus or Online	Cohort B: On Campus or Online

*Monday dismissal will be 30 minutes earlier to allow for teacher trainings.

Middle School/High School Sample Student Schedule: On Campus

	Alternating MONDAY		Cohort H: Tue/Thu Cohort L: Wed/Fri
8:30 - 9:00	Transition Time	8:30 - 9:00	Transition Time
9:00 - 9:30	Morning Check-In	9:00 - 9:30	Morning Check-In
9:30 - 10:30	Period 1 or 2	9:30 - 10:40	Period 1 or 2
10:40 - 11:40	Period 3 or 4	10:50 - 12:00	Period 3 or 4
11:40 - 12:20	LUNCH	12:10 - 12:40	Advisory
12:20 - 1:20	Period 5 or 6	12:40 - 1:20	LUNCH
1:30 - 2:00	Advisory	1:20 - 2:30	Period 5 or 6
2:00	Dismissal	2:30	Dismissal

Middle School/High School Sample Student Schedule: Online

	Alternating MONDAY		TUES - FRI
8:30 - 9:00	Advisory	8:30 - 9:00	Advisory
9:30 - 10:30	Period 1 or 2	9:30 - 10:40	Period 1 or 2
10:40 - 11:40	Period 3 or 4	10:50 - 12:00	Period 3 or 4
11:40 - 12:20	LUNCH	12:40 - 1:20	LUNCH
12:20 - 1:20	Period 5 or 6	1:20 - 2:30	Period 5 or 6



RETURN TO CAMPUS

Resources for Students and Families

<https://achieve.lausd.net/returnfaq>

Frequently Asked Questions

Los Angeles Unified will update this Return to Campus FAQ as more information becomes available.

Why has Los Angeles Unified not opened when other schools in our geographic area have partially reopened?

Los Angeles Unified has used safety as our number one priority in reopening schools. We are closely monitoring infection rates within our district, which may be much higher in some parts of our district when compared with neighboring districts. Furthermore, although the infection rate might be lower near one specific school in our district, that may not be true across our all or our communities. Our goal remains to open schools in the safest way possible for all students and for all those who work in our schools.

How will we be notified when students will return to school?

Superintendent Austin Beutner will provide this information to parents via his weekly updates, which can be viewed at 11 a.m. on Mondays at lausd.net or K LCS-TV (check local listings). Up to-date information will also be available at lausd.net and will be sent via email, phone calls, text messages. Your school principal will also send and post messages with this information as soon as it becomes available.

What steps have been taken to increase safety at school facilities?

All schools have been cleaned, top to bottom, and are well-stocked with cleaning supplies. Air filters in the ventilation systems have been replaced with those made of the material used to manufacture N-95 masks, and classroom surfaces are cleaned nightly with electrostatic machines. Signs and markings have been installed at schools to promote social distancing. We will continue to heed the recommendations of health experts on how to reduce health risks at schools.

What types of precautions will be taken when school facilities reopen?

Clear health and safety protocols are being developed. These include symptom checks and screening, modified classroom layouts, staggered start times, physical distancing of at least 6 feet, one-way foot traffic in hallways, face coverings, hygiene, disinfecting furniture and other surfaces and upgrading air-filtration systems.

Once campuses reopen, will there still be an online-only option for families that don't want to send their students back to school campuses?

Yes, all families will have the option to keep their students in an online-only instructional model once students begin physically returning to campuses. Families will be asked about their preferences for their student's learning options in March.

What will schedules look like for my student? Will I receive childcare information, including before and after school care, prior to selecting a school option for my child?

Specific school schedules will be available for families when selecting an option for your child to ensure you have all the details necessary to make an informed decision. We will also be collecting information on your need for child care so that we can provide even more specific information to you about your enrollment in these programs once campuses reopen fully.

What is the district's plan if one child tests positive for COVID-19 at a school site after students return to campus?

Los Angeles Unified has an exposure management plan in accordance with guidelines from LA County Department of Public Health. If a student tests positive for COVID-19, the student will not be allowed to return to campus until they have completed an isolation period of 10 days and are cleared to return by our Community Engagement Team.

What happens if a family member tests positive for COVID-19?

If a student reports that a family member in their home or a close contact tested positive for COVID-19, they must quarantine at home for 14 days.

Are all the teachers and administration, as well as clerks and staff around our children, required to be vaccinated?

As part of the District's plan to bring students and staff back to school in the safest way possible, school staff need to be offered the opportunity to receive the vaccine. There are more than 86,000 people who work in traditional and charter schools in Los Angeles Unified, and our initial focus will be to vaccinate school staff who are currently working at school sites and all who are involved in preschool and elementary school.

Will students be vaccinated?

Currently, available vaccines for COVID-19 are only approved for 16 and older. The District does not have any current plans to vaccinate students.

Where can I request assistance from a professional for members of my family to get support with stress, anxiety, and other mental health needs?

Families may contact their school site administrator to request services from school site providers and community agencies. A Los Angeles Unified hotline is also available to assist families at 213-241-3840.

How do I stay connected to my child's school?

Parents and guardians should create a Parent Portal account in order to stay connected to student academic progress and attendance. To register for an account, contact your child's school to receive a unique 4-digit PIN and the child's district-issued ID number. Visit the Parent Portal Resources [website](#) for more information.

If I am unable to connect with my school site for assistance, whom may I contact?

You are welcome to contact the Los Angeles Unified Family Hotline at 213-443-1300 and a representative will connect you to the school and office able to offer assistance.

VNVG Community of Schools Highlights

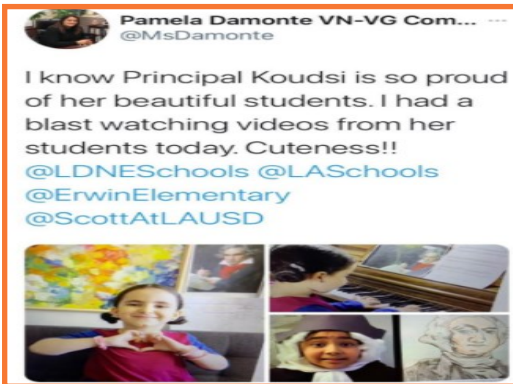
Staff Profile:

Mr. Manny Villanueva
School Supervision Officer

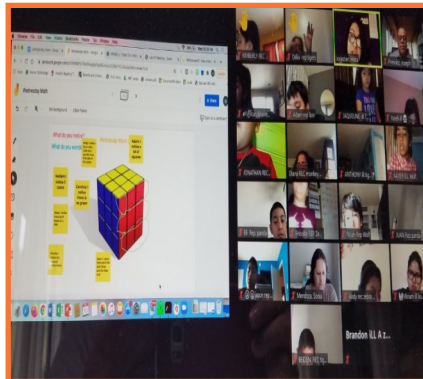
"We thank officer Villanueva for his many years of service in Local District Northeast. We wish him luck as he leaves the Madison family...an amazing guy with a big heart."



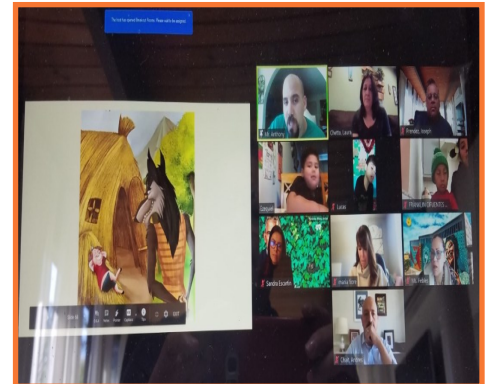
Coldwater Canyon student Daniel Ng recited the Pledge of Allegiance at the Board of Education Meeting.



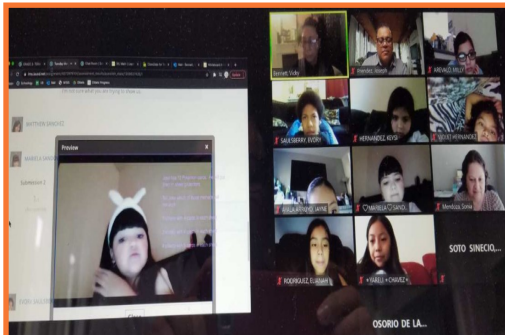
Erwin Elementary students show their talents during their virtual lesson.



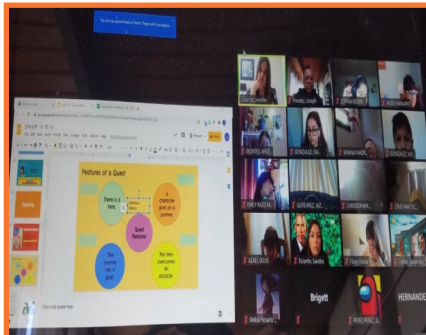
Students at Van Nuys Elementary explain their thinking.



Sylvan Park EL students share their knowledge with Superintendent Chait.



Students at Van Nuys Elementary share their work using video screen.



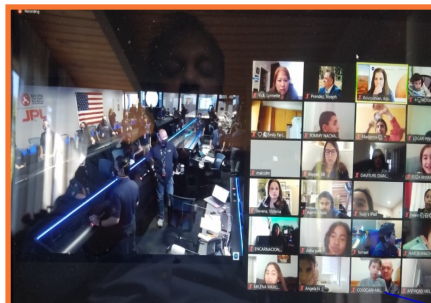
Students at Sylvan Park use annotations to share their responses.



Sylvan Park EEC student Jose Reyes is fully engaged in his learning.



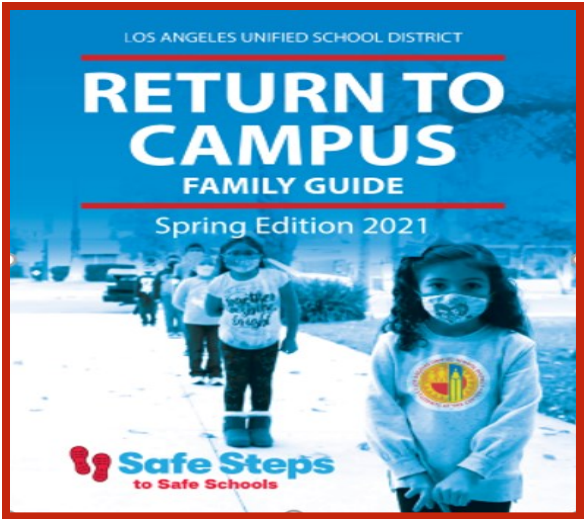
Riverside Charter School student Anna Kromberg is a panelist at the Superintendents' Parent Advisory Meeting



Monlux Students partner with NASA to observe Perseverance



Sylvan Park EEC uses the scientific method to perform their science project.



<https://reopening.lausd.net/familyguide>

TECHNOLOGY UPDATE



- Contact the school if you have a technology concern or need to request a device.
- You can also contact Local District Northeast if you are unable to reach the school.
- Local District Northeast will reach out to the principal at your request.
- 1 hotspot for each household.

PARENT PORTAL REGISTRATION

Have you registered for Parent Portal? ¿Se ha registrado para una cuenta de Parent Portal?

Parent Portal

- Monitor Progress towards Graduation**
Darle seguimiento al progreso hacia la graduación
- Check Attendance**
Verificar asistencia
- Monitor Grades and Assignments**
Darle seguimiento a calificaciones y tareas
- Update Emergency Contact Information**
Medio de actualizar la información para casos de emergencia
- Get Information on English Learner Progress**
Obtener información sobre el progreso de los aprendices del inglés

LOS ANGELES UNIFIED SCHOOL DISTRICT
PARENT AND COMMUNITY SERVICES

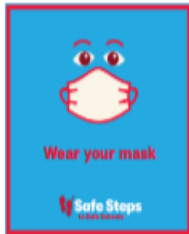
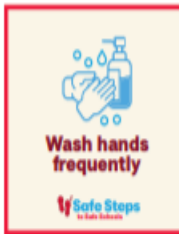
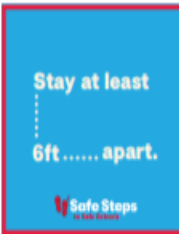
Safe Steps to Safe Schools

GET YOUR COVID-19 TEST, USE THE DAILY PASS & STAY SAFE

If we all take these Safe Steps to Safe Schools, together we help stop the spread of COVID-19 and get back to the classroom.

GO TO: dailypass.lausd.net

- 1 Get tested for COVID-19**
Knowing where the virus is in the community is how we know when to go back to school safely.
- 2 Commit to Healthy Behaviors**
Wear your mask, socially distance and wash your hands to prevent the spread of COVID-19.



- 3 Use the Daily Pass**
With the Daily Pass, employees, parents, and students can book their COVID-19 test appointments, get their results, answer the Daily Health Check questions and get a Daily Pass that admits you onto a campus or office.



I got tested for COVID-19 at Los Angeles Unified!

To schedule yours, go to dailypass.lausd.net

Safe Steps to Safe Schools

For help scheduling a COVID-19 test or using the Daily Pass, contact your school site or call the Los Angeles Unified Helpdesk at (213) 443-1300.

SCHOOL & FAMILY SUPPORT SERVICES

Do you have questions about...

- The special education process.
- Special education policies and procedures.
- Extended School Year (ESY) enrollment.
- Regular School Year (RSY) enrollment for students with IEPs.

Tienes preguntas sobre ...

- El proceso de educación especial.
- Políticas y procedimientos de educación especial.
- Inscripción especial (ESY)
- Inscripción en el año escolar regular (RSY) para estudiantes con IEP.

Contact:
Phone: (213) 241-6701
Email: spedsfss@lausd.net
Monday-Friday 8:00 AM to 4:00 PM

Call Los Angeles Unified's Student & Family Wellness Hotline
 Consultations, Support & Referrals

Need help?
Call (213) 241-3840
 Weekdays 8 am to 5 pm

For support with:
 Mental health
 Immunizations
 Health insurance
 Food and housing
 Enrollment
 And more

Los Angeles Unified School District

Local District Northeast/Northwest

UMOJA
 VILLAGE MOVEMENT MENTORING PROGRAM (Swahili Word Meaning Unity)

"Black student, faculty, staff or family: do you feel isolated? If so, let's break the isolation and build community. Join the Umoja Village Movement Mentoring Program! A community designed and created just for you! We welcome everyone of African Descent."

- Meetings: Bimonthly, Wednesdays . 5:00-6:30 PM
- Afrocentric Art
- Cultural Enrichment Through Literacy and Exposure Opportunities
- Black Excellence Celebrations
- Black History Games - Field Trips
- Virtual College & HBCU Tours
- Mentorship

Register: [REGISTRATION](#)
 For More Information Contact:
Mary.Jackson-Freeny@lausd.net or 818-456-7945

"Where the Black Community Comes Together to Learn, Play and Grow"

Los Angeles Unified School District
 Student Health and Human Services
 School Mental Health

Early Childhood Mental Health Consultation Line

Families & Educators Need Support?

CALL (213) 443-0165 for consultation, support & referrals for Birth - 5
Weekdays 8 am - 5 pm

Your call will be answered by Early Childhood Mental Health Consultants, trained psychiatric social workers who are standing by to provide you with:

- Information to help nurture the healthy development of children birth-5 years old
- Parenting support to help build on the parenting skills you already have, including how to manage challenging behaviors and build a nurturing relationship with your child
- Referrals to community resources and other services
- Parent support during distance learning

Resources:
Hotlines (6:00 a.m. to 6:00 p.m.)
 Families: 213-443-1300 Employees: 213-241-2700
<http://achieve.lausd.net/resources>

Mental Health Support (8:00 a.m. to 5:00 p.m.)
 Student and Families: 213-241-3840
<http://achieve.lausd.net/Page/16559#spn-contents>

Division of Special Education Website:
<https://achieve.lausd.net/sped>

Local District Northeast Resources for Parents
 Call: 818-252-5400 (7:30 a.m. to 5:00 p.m.)
 Email: LDNorthEast@lausd.net
<https://sites.google.com/lausd.net/ldne-resources-for-parents/home>

Device Connectivity
 213-443-1300
<http://achieve.lausd.net/itd>

Device + Connectivity = Learning

Los Angeles Unified School District
 Office of Parent and Community Services and Local District Northeast

Local Control and Accountability Plan (LCAP) Study Group 2020 - 2021

The LCAP Study Group purpose is to:

- Build understanding about the LCAP with Local District parent leaders
- Capture parent feedback about LCAP programs and funding
- Provide parents with opportunities to serve on the District-level Parent Advisory Committee

Please join us on Zoom! All parents are welcomed and encouraged to participate.

Meeting Dates:

#1: Orientation
 Wednesday, September 30, 2020
 Time: 2:30 p.m.
 Meeting ID: 915 3366 7687
 Passcode: 2018

Election Meeting
Thursday, October 15, 2020
2:30 p.m.
 Meeting ID: 913 7718 9703
 Passcode: 126504

#2:
 Wednesday, October 28, 2020
 Time: 2:30 p.m.
 Meeting ID: 964 8912 4958
 Passcode: 2018

#3:
 Wednesday, December 9, 2020
 2:30 p.m.
 Meeting ID: 990 9407 7267
 Passcode: 2018

#4:
 Wednesday, February 24, 2021
 2:30 p.m.
 Meeting ID: 958 8382 7742
 Passcode: 2018

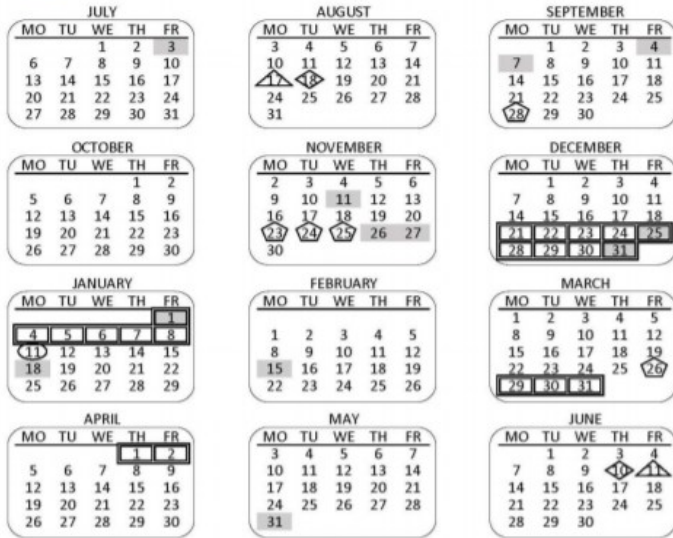
#5:
 Wednesday, April 7, 2021
 2:30 p.m.
 Meeting ID: 990 6937 6472
 Passcode: 2018

*The School is the Heart of the Community
 La Escuela es el Corazón de la Comunidad*

SCHOOL CALENDAR



LOS ANGELES UNIFIED SCHOOL DISTRICT
SINGLE-TRACK INSTRUCTIONAL SCHOOL CALENDAR 2020-2021

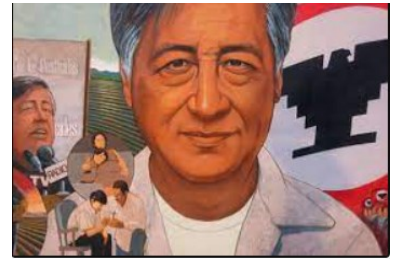


07/03/20 Independence Day Observed	01/11/21 Second Semester Begins
08/18/20 First Day of Instruction	01/18/21 Dr. Martin L. King Birthday
09/04/20 Admission Day	02/15/21 Presidents' Day
09/07/20 Labor Day	03/26/21 Cesar E. Chavez Birthday Observed
11/11/20 Veterans Day	03/29 - 04/02/21 Spring Recess
11/26 - 11/27/20 Thanksgiving Holiday	05/31/21 Memorial Day
12/21/20 - 01/08/21 Winter Recess	06/10/21 Last Day of Instruction

LEGEND:	Instructional Days
◇ First Day/Last Day of Instruction	Fall Semester..... 80
□ Legal/Local Holidays	Spring Semester..... 100
○ School Recess	Total..... 180
○ Unassigned Day (schools not in session)	
○ Pupil Free Days *	
○ Second Semester Begins	

* Scheduled pupil free days are Monday, August 17, 2020 and Friday, June 11, 2021.
If a school selects Monday, January 11, 2021 as a pupil free day, then Friday, June 11, 2021 becomes an instructional day.
Board Approved December 12, 2017

Schools will be closed:
Friday, March 26, 2021
In observance of
Cesar E. Chavez Birthday



Spring Break
Monday, March 29
to
Friday, April 2, 2021

School Resumes on
Monday, April 5, 2021



LOS ANGELES UNIFIED SCHOOL DISTRICT



GRAB & GO FOOD CENTER
CENTRO DE COMIDA PARA LLEVAR

Free Meals Every Weekday
7:00 a.m.10:00 a.m.

Please visit the following Grab & Go Food Center within our Community of Schools located at:

Van Nuys Senior High School

Van Nuys / Valley Glen Community of Schools:	<i>Kester EL</i>	<i>Madison MS</i>
<i>Cardenas EL</i>	<i>Kittridge EL</i>	<i>Millikan Charter & Perf. Arts</i>
<i>Chandler EL</i>	<i>Monlux EL</i>	<i>Van Nuys MS</i>
<i>Coldwater Canyon EL</i>	<i>Riverside Dr. Charter</i>	<i>Grant HS</i>
<i>Columbus EL</i>	<i>Sherman Oaks EL</i>	<i>London CDC</i>
<i>Dixie Canyon Comm. Charter</i>	<i>Sylvan Park EL</i>	<i>London HS</i>
<i>Erwin EL</i>	<i>Van Nuys EL</i>	<i>Rogers HS</i>
<i>Hazeltine EL</i>	<i>Sylvan Park EEC</i>	<i>Van Nuys SH</i>

Contact Us:
Community of Schools Administrative Office:
Madison MS
13000 Hart Street
North Hollywood, CA 91605
Ph: (818) 299-5861 / (818) 252-5400
Fax: (818) 299-5863

Follow us on:

